

WIRE SNAGGER®

Wire Pulling Tool
for All Cable Jackets including Non-Lube



CLICK IT!
SNAG IT!
PULL IT!

**“What was the BEST before
is NOW even BETTER!”**

Read about our new innovative Spring-Loaded Teeth



RECTORSEAL

What is Wire Snagger?

Since their introduction in 2005, Wire Snagger® tools have revolutionized wire pulling. These patented tools from RectorSeal® have saved electrical contractors thousands of labor hours and drastically reduced the cost of setting up multiple wire pulls, when compared to older methods. With Wire Snagger®, there's no need to strip, tape, trim or tie wires and the job can be done by an apprentice. Contractors using the Wire Snagger® complete more pulls and save time and money.

Wire Snagger® tools are made of heat-treated stainless steel and are available in a range of sizes that work with wire from 2/0 through 600 MCM. To set up a pull, simply insert the end of the wire into the tool and push until it stops. The spring-activated teeth will automatically bite into the cable coating. After the pull, cut the wire two inches below the tool, unscrew the specially-designed cap and push the wire out of the top end of the tool.



"After the demonstration at our office, I purchased a set for 400-500 MCM for use on the UALR Student Housing Project. The labor savings on the first use has paid for the tools. We are able to cut pulling time in half on multiple runs of 500 MCM. The Wire Snagger® will be a definite 'must' for all our feeder projects in the future." - Mike Alberson, Project Manager, IK Electric, Little Rock, AR

New Features

Now it's even faster and easier to use the revolutionary Wire Snagger® to set-up, complete and tear-down multiple wire pulls. Set-up time has been reduced to less than 1 minute. Improved Wire Snagger® tools now contain spring-loaded teeth for a stronger grip on the cable, giving them more than twice the pulling power of the original tools. New shortened tool bodies easily navigate 90 degree bends in conduit, and longer lanyards increase spacing between tools, to reduce congestion at tight corners.



To learn more about this amazing advance in wire pulling technology and see how it works, visit Rectorseal® on the web at www.rectorseal.com and click on "Products," then use the "Wire Snagger" link.

Single Lanyard

Code	Wire Snagger® 3/0	Qty. per Case
Wire: 2/0, 3/0		
97961	1 tool w/ 3" wire lanyard	1
97962	1 tool w/ 12" wire lanyard	1
97963	1 tool w/ 21" wire lanyard	1
97964	1 tool w/ 30" wire lanyard	1

Code	Wire Snagger® 4/0	Qty. per Case
Wire: 4/0, 250 MCM		
97965	1 tool w/ 3" wire lanyard	1
97966	1 tool w/ 12" wire lanyard	1
97967	1 tool w/ 21" wire lanyard	1
97968	1 tool w/ 30" wire lanyard	1

Code	Wire Snagger® 350	Qty. per Case
Wire: 350 MCM		
97969	1 tool w/ 3" wire lanyard	1
97970	1 tool w/ 12" wire lanyard	1
97971	1 tool w/ 21" wire lanyard	1
97972	1 tool w/ 30" wire lanyard	1

Code	Wire Snagger® 500	Qty. per Case
Wire: 500 MCM		
97973	1 tool w/ 3" wire lanyard	1
97974	1 tool w/ 12" wire lanyard	1
97975	1 tool w/ 21" wire lanyard	1
97976	1 tool w/ 30" wire lanyard	1

Code	Wire Snagger® 600	Qty. per Case
Wire: 600 MCM		
97977	1 tool w/ 6" wire lanyard	1
97978	1 tool w/ 18" wire lanyard	1
97979	1 tool w/ 30" wire lanyard	1
97980	1 tool w/ 42" wire lanyard	1

Code	Wire Snagger® 2000	Qty. per Case
Wire: 500 MCM 5kV		
97925	1 tool w/ 6" wire lanyard	1
97926	1 tool w/ 18" wire lanyard	1
97927	1 tool w/ 30" wire lanyard	1
97928	1 tool w/ 42" wire lanyard	1

US Patent Number 6,883,782;
7,128,306; 7,246,789

Double Lanyards

Code	Wire Snagger® 3/0	Qty. per Case
Wire: 2/0, 3/0		
97981	2 tools w/ 3" & 12" combined wire lanyards	1
97982	2 tools w/ 21" & 30" combined wire lanyards	1

Code	Wire Snagger® 4/0	Qty. per Case
Wire: 4/0, 250 MCM		
97983	2 tools w/ 3" & 12" combined wire lanyards	1
97984	2 tools w/ 21" & 30" combined wire lanyards	1

Code	Wire Snagger® 350	Qty. per Case
Wire: 350 MCM		
97985	2 tools w/ 3" & 12" combined wire lanyards	1
97986	2 tools w/ 21" & 30" combined wire lanyards	1

Code	Wire Snagger® 500	Qty. per Case
Wire: 500 MCM		
97987	2 tools w/ 3" & 12" combined wire lanyards	1
97988	2 tools w/ 21" & 30" combined wire lanyards	1

Code	Wire Snagger® 600	Qty. per Case
Wire: 600 MCM		
97989	2 tools w/ 6" & 18" combined wire lanyards	1
97990	2 tools w/ 30" & 42" combined wire lanyards	1

Code	Wire Snagger® 2000	Qty. per Case
Wire: 500 MCM 5 kV		
97945	2 tools w/ 6" & 18" combined wire lanyards	1
97946	2 tools w/ 30" & 42" combined wire lanyards	1

Master Set

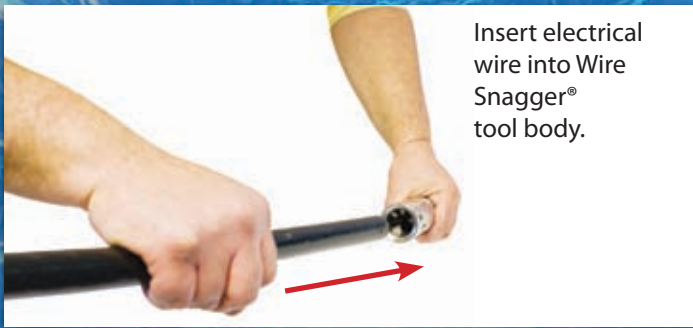
Code	Wire Snagger® Master Set	Qty. per Case
20 Tools		
97957	Master Case	1

Master Set consist of the following:

- 2 WS-3/0 tools connected to a 3" & 12" combined wire lanyards
- 2 WS-3/0 tools connected to a 21" & 30" combined wire lanyards
- 2 WS-4/0 tools connected to a 3" & 12" combined wire lanyards
- 2 WS-4/0 tools connected to a 21" & 30" combined wire lanyards
- 2 WS-350 tools connected to a 3" & 12" combined wire lanyards
- 2 WS-350 tools connected to a 21" & 30" combined wire lanyards
- 2 WS-500 tools connected to a 3" & 12" combined wire lanyards
- 2 WS-500 tools connected to a 21" & 36" combined wire lanyards
- 2 WS-600 tools connected to a 6" & 18" combined wire lanyards
- 2 WS-600 tools connected to a 30" & 42" combined wire lanyards
- 1 Wire Snagger® Cleaner, Lubricant & Brush



Easy as: Click it! Snag it! Pull it!



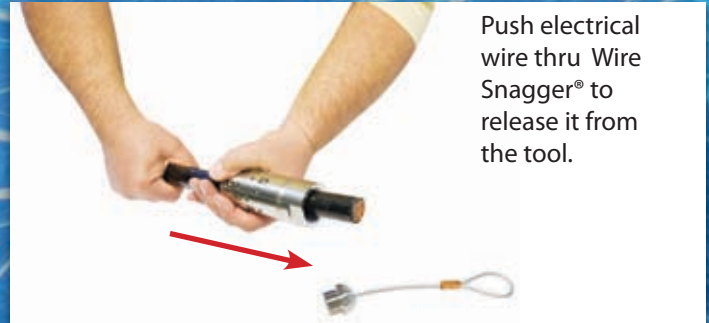
Insert electrical wire into Wire Snagger® tool body.



Pull on electrical wire to secure it inside Wire Snagger®.



Once pull is complete, cut electrical wire & unscrew Wire Snagger® cap.



Push electrical wire thru Wire Snagger® to release it from the tool.

Wire Snagger® Cleaner

Dirt may build up around the teeth of the Wire Snagger® during repeated use. Failure to properly clean the tool may result in improper engagement of the teeth. Use Wire Snagger® Cleaner to keep tool in proper working order.



Code	Wire Snagger® Cleaner	Qty. per Case
High Performance Cleaner & Lubricant		
97960	14 oz. Aerosol & Brush	12



Wire Snagger® Specifications

Wire Snagger®	THHN / XHHW Wire	Max Intermittent Load (lbs)		Max Continuous Load (lbs)		Min copper conductor diameter (in)	Max copper conductor diameter (in)	Min overall diameter (in)	Max overall diameter (in)	Minimum Conduit Size (in)			
		One Tool	Four Tools	One Tool	Four Tools					1 Wire	2 Wires	3 Wires	4 Wires
WS 3/0	2/0	1000	4000	600	2400	0.376	0.470	0.518	0.590	1.5	2	2	2*
	3/0	1000	4000	600	2400					1.5	2	2*	2*
WS 4/0	4/0	1600	6400	1000	4000	0.475	0.575	0.624	0.720	2	2.5	2.5	2.5
	250 MCM	2400	9600	1400	5600					2	2.5	2.5	2.5
WS 350	350 MCM	2400	9600	1400	5600	0.616	0.681	0.777	0.825	2	2.5	2.5	2.5
WS 500	500 MCM	3600	14400	2200	8800	0.736	0.813	0.902	0.960	2.5	3	3	3*
WS 600	600 MCM	3600	14400	2200	8800	0.813	0.893	1.020	1.080	2.5	3	3*	3.5
WS 2000	500 MCM 5kV	2000	8000	800 w/o pin	3200 w/o pin	0.750	0.926	-	1.285	-	-	-	4
				1100 w/pin	4400 w/pin								

For use on THHN & XHHW copper wire only. *May require special service (such as removing bushing and installing extra guide pulleys) when pulling Max diameter wires through Min size conduit.

